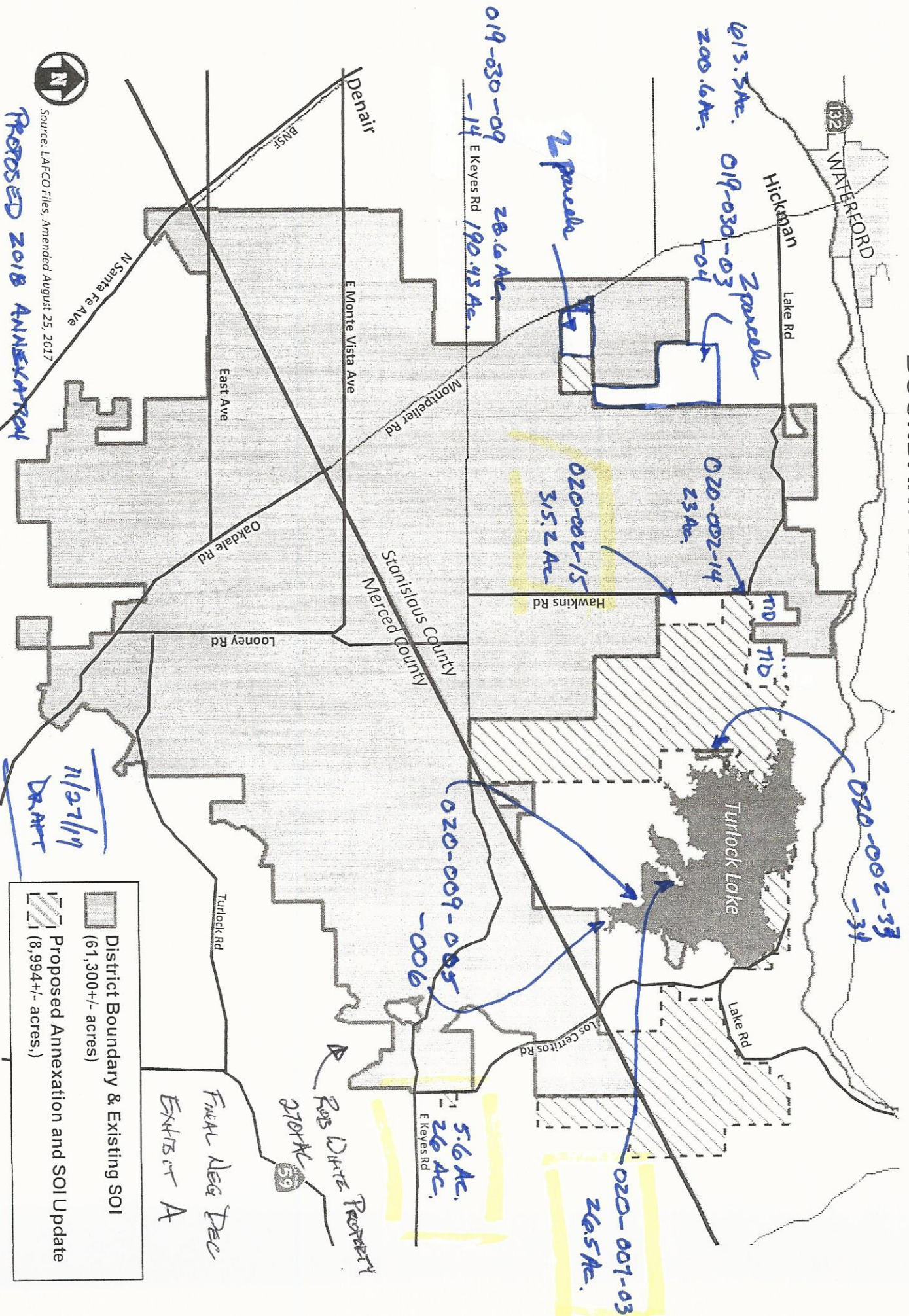


EASTSIDE WATER DISTRICT BOUNDARY AND SPHERE OF INFLUENCE



Source: LAFCO Files, Amended August 25, 2017

PROPOSED 2018 ANNEXATION

	District Boundary & Existing SOI (61,300 +/- acres)
	Proposed Annexation and SOI Update (8,994 +/- acres)